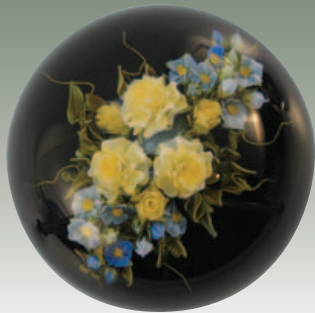


WHEATONARTS Paperweight Fest 2010 RAFFLE



David Graeber

Yellow Roses Bouquet Weight
with forget-me-nots on
dark green ground.
3" dia.
Value \$1,750



James Kontes

Three Flowers Weight
with blue ground. Top
facet with six side facets.
3" dia.
Value \$2,000



Gordon Smith

Red and Green Strawberries Weight
with buds and rocks on a
moss and dirt ground.
3" dia.
Value \$3,000



Paul Stankard

Mountain Laurel Bouquet Orb
with pink buds, red beetles, a
honeybee and root spirits.
Stand included. 3.5" dia.
Value \$6,000

WHEATONARTS

Paperweight Fest 2010 Raffle

In conjunction with Paperweight Fest 2010 presented by the Delaware Valley Chapter Paperweight Collectors Association and WheatonArts, WheatonArts is holding its third **Great Paperweight Raffle**. David Graeber, James Kontes, Gordon Smith and Paul Stankard have generously donated four pieces of their art to benefit WheatonArts' Education Programs.

For a very small investment, you can take a chance to win a Graeber, Kontes, Smith or Stankard and help support the art of the paperweight that is so integral to the history of glassmaking in Southern New Jersey.

Raffle Tickets are \$10.00 each or 3 for \$25.00

For tickets, visit WheatonArts or contact us at 800.998.4552, extension 100, or www.wheatonarts.org.

Completed ticket stubs and proceeds should be returned by May 1, 2010 to

Wheaton Arts and Cultural Center
1501 Glasstown Rd., Millville, NJ 08332-1566

The winning tickets will be drawn
Saturday evening, May 15, 2010 at 9pm.

WheatonArts is a non-profit 501(c)(3) arts organization. Need not be present to win. Winner will be notified by telephone or e-mail. No substitution for the offered prizes allowed and no cash value will be given.

ID No. 310-5-25604 License No. RL-890

wheatonarts.org



Large

Print

WheatonArts strives to ensure the accessibility of its exhibitions, events and programs to all persons with disabilities. Provide two weeks notice for special accommodations. Patrons with hearing and speech disabilities may contact WheatonArts through the New Jersey Relay Service (TRS) 800-852-7899 or by dialing 711.

Funding has been made possible in part by the New Jersey State Council on the Arts, a Partner Agency of the National Endowment for the Arts, the Geraldine R. Dodge Foundation, and the National Endowment for the Arts. WheatonArts receives general operating support from the New Jersey Historical Commission, Division of Cultural Affairs in the New Jersey Department of State and is supported in part by the New Jersey Department of State, Division of Travel and Tourism.